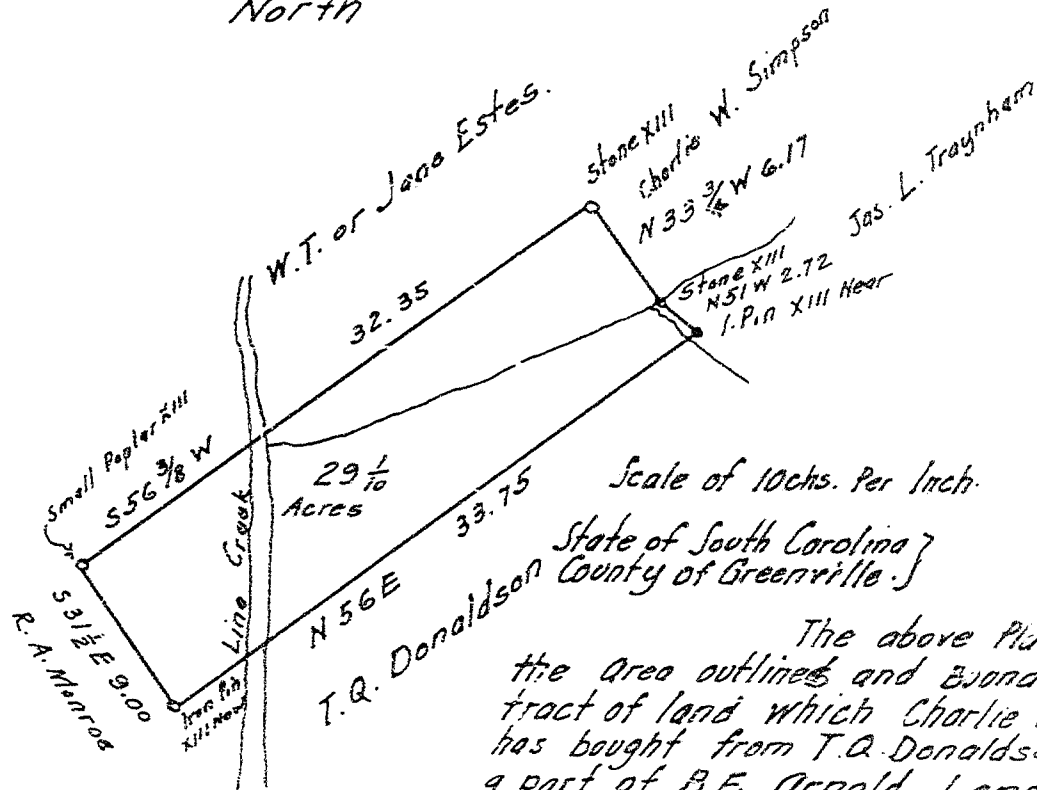


North



Scale of 10chs. Per Inch.
 State of South Carolina }
 County of Greenville. }

The above Plat represents
 the area outlined and boundaries of a
 tract of land which Charlie W. Simpson
 has bought from T.Q. Donaldson. It being
 a part of B.F. Arnold Land.
 Surveyed Jan. 29 + 31 1906
 John H. Gaines, Surveyor

BAD COPY